

# CAMP SOUTH AFRICA

Parent Pack



 **SUSTAINABLE**  
TRAVEL INTERNATIONAL

 **INFO@CAMP.CO.UK**

 **0161 222 3780**





## WELCOME TO CAMP SOUTH AFRICA

Here at Camp.co.uk, we know it can be daunting watching your child jet off on their first solo venture around the world! That's why we're here to answer your frequently asked questions in regards to payment, your child's safety, communication and other frequently asked questions.

We've sent thousands of young adults on exciting Camp tours over the years, a truly once in a lifetime opportunity for all those who have joined us. We'll start with a little bit about our Camp South Africa programmes.



### ANIMAL CONSERVATION

An exciting 2 week programme based on the Kragga Kamma game reserve home to the big 5, we get hands on with animal conservation, reserve maintenance and animal learning. We help out around the reserve Monday to Friday with weekends and evenings as free time to explore and enjoy what South Africa has to offer!



### ENGLISH TEACHING AND SPORTS COACHING

An extremely rewarding 5 week programme located near Port Elizabeth. Monday to Friday we visit schools, for teaching the participants will be involved in helping with Maths and English to slow and fast learning children in grades 4, 5, 6 and 7. However, some participants may get the chance to teach a whole class of children, either by themselves or alongside other volunteers! For Sports Coaching participants will coach in three different schools a day for about an hour and a half at each, they will be transported to and from each by the team in South Africa. Depending on the number of coaches there at the same time, they will usually be coaching in groups of twos or threes. So don't worry it's a team effort! Weekends and evenings are free time to relax and explore Port Elizabeth.



[CAMP SOUTH AFRICA.COM](http://CAMP SOUTH AFRICA.COM)



[INFO@CAMP.CO.UK](mailto:INFO@CAMP.CO.UK)



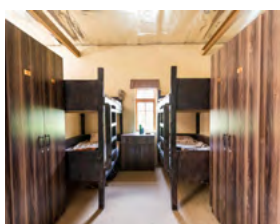
0161 222 3780





## What is accommodation like at Camp South Africa?

Accommodation for Camp applicants varies dependent on which Camp program you choose to apply for:



**Animal Conservation** – 14 nights accommodation on location at the game reserve in a purpose-built guest centre.



**Sports coaching & English Teaching** – Shared House with a swimming pool and other amenities.



All accommodation has wifi, fans/aircon

## Will I be able to speak to my child during their time on Camp South Africa?

Yes, there will be Wi-Fi available at the accommodation of Camp so your child will be able to call home without charge; please take into consideration that connectivity may not be up to the standards in the UK.

## Are meals included and do you cater for allergies/intolerances?

For each of our programmes on Camp South Africa, 3 meals a day are included in the program fees from Monday-Friday. Weekends are free time and meals aren't included, however the programme coordinator will be on hand to help advise of some great places to eat! We accommodate for wide range allergies and intolerances, any dietary requirements will need to be detailed in the documentation before departure to avoid any issues on Camp.

## What support will my child receive on Camp?

Our partners on the ground are United through Sport for English Teaching/Sports Coaching and Kwantu for Animal Conservation. These representatives and programme leaders are always around to help arrange volunteering time, assist with anything our customers need, give recommendations on where to eat and extra activities to do. Our leaders are always around to ensure everyone is happy and having a good time on Camp with us.



### Is it safe?

Port Elizabeth is one of the safest cities in South Africa and our programme coordinators will always be on hand. Our programmes are all safety checked with extensive risk assessments completed, all accommodation is fenced off with security on site at all times and included transport to volunteering opportunities is via private minivan and no public transport.

### Are you ABTA & ATOL protected?

Yes, travel with confidence knowing we're members of ABTA (membership no. Y4841). Any flights booked through our team are ATOL protected.

### Are flights included?

Applicants for the Camp South Africa program are responsible for booking their own flights due to the constant fluctuation of flight prices. It would be impossible for us to keep a fair price! We have an amazing in-house flights team at HQ devoted to helping find the very best offers, ensuring your child will arrive and leave Camp at the right times.

To speak with a member of the team, call +441613123459 or email [flights@invasion.com](mailto:flights@invasion.com)

### Will my child need a passport and Visa?

Passport: A full passport valid for the duration of stay is required. Your child will need to have at least 6 months left on their passport from the time they arrive in South Africa.

If you're visiting South Africa for tourism or business purposes for a period of up to 90 days, you don't need a visa. For more information on visas contact the South African High Commission or the South African Department of Home Affairs.

### What happens if my child has to pull out at the last minute?

If you have not yet secured your spot with a deposit then we can defer your acceptance offer up to 2 years.

We strongly advise that after your child has secured their place on the program they get travel insurance to cover any unexpected events resulting in not being able to attend camp.

With our flexible booking policy we can move the trip date up to 2 years from the original departure date, we can even change their Camp location if they wanted to go to one of other destinations instead. If you did not wish to defer your place you can check out our T&C's for all the applicable cancellation charges [HERE!](https://campsouthafrica.com/terms-and-conditions-legal/) <https://campsouthafrica.com/terms-and-conditions-legal/>

### What do they do on weekends?

Weekends they are free to explore the surrounding areas with their new Campmates. Our programme coordinators will be on hand to recommend places to see and activities to do. We include a few tours on Camp like a river cruise and Braai BBQ!

### What age and how many people usually go on Camp South Africa?

Our average age for Animal Conservation is 18-25, for English Teaching/Sports Coaching it's 17-24. We usually have around 7-15 people per trip, however it can depend on the time of year. June-August is our peak season.



## What if I need to contact you while my child is away?

You can contact our team on 0161 222 3780, Monday – Friday. Alternatively drop our team and email at [info@camp.co.uk](mailto:info@camp.co.uk) and we'll get back to you as soon as we can.

## How do payments work?

Your child will have 3 options when it comes to securing there spot with us on Camp South Africa:

A £49 deposit followed by a monthly payment plan to spread the cost via direct debit. The monthly amount will vary depending on the dates you choose, as the later the dates you choose, the longer there is to pay off the balance. Check out our payment calculator on the costs and dates page!

A slightly higher £199 deposit allows you to pay at your own pace, through the customer portal they'll be able to make payments of any amount whenever they want, just remember they do have to be paid off at least 2 months prior to departure.

Pay in full and and save £50.